

colon

I
 ['kɒvlən] *n* (*pl* *мж. cola*) *анат.*
 ободочная кишка, толстая кишка

II
 ['kɒvlən] *n* (*pl* *мж. cola*)
 1) двоеточие
 2) знак деления, знак отношения

II
 ['kɒvlən, kə'lɒn] *n* *фр.*
 1. колонист; поселенец
 2. плантатор

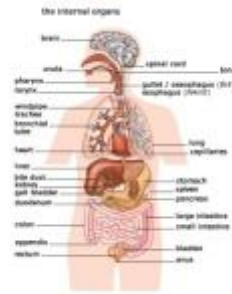
IV
 [kəv'ɒn] *n* (*pl* *colonos*)
 колон (*денежная единица Коста-Рики, Сальвадора*)

Oxford Advanced Learners Dictionary 8th Ed.

colon

colon [colon colons] *BrE* ['kəʊlən] ^m *NAmE* ['kɒlən] ^m *noun*

1. the mark (:): used to introduce a list, a summary, an explanation, etc. or before reporting what sb has said
compare ↑semicolon
2. (*anatomy*) the main part of the large ↑intestine (= part of the ↑bowels)



Word Origin:

sense 1 mid 16th cent. Latin Greek *kōlon* 'limb, clause'

sense 2 late Middle English Latin Greek *kolon*

colon

Longman DOCE 5th Ed. (En-En)

co|lon /'kəʊlən \$ 'kou-/ *BrE* ^m *AmE* ^m *noun* [countable]

[**Sense 1:** **Date:** 1300-1400; **Language:** Latin; **Origin:** Greek *kolon* 'large intestine, food, meat']

[**Sense 2:** **Date:** 1500-1600; **Language:** Latin; **Origin:** 'part of a poem', from Greek *kolon* 'arm or leg, part of a poem']

1. **technical** the lower part of the ↑bowels, in which food is changed into waste matter
2. the sign (:): that is used in writing and printing to introduce an explanation, example, ↑quotation(1) etc ⇒ **semicolon**

• • •

THESAURUS

■ **types of punctuation mark**

- **apostrophe** the sign ' that is used to show that one or more letters or numbers have been left out, as in **don't**, or used before 's' to show that something belongs to someone or something, as in **Mark's dog**
- **brackets** *British English*, **parentheses** *AmE and BrE formal* a pair of signs used for enclosing information that interrupts a sentence
- **colon** the sign : that is used to introduce an explanation, example, quotation etc
- **semicolon** the sign ; that is used to separate words in a list, or different parts of a sentence that can be understood separately
- **comma** the sign , that is used to separate things in a list, or between two clauses in a sentence
- **hyphen** the sign – that is used to join words or syllables
- **dash** the sign — that is used to separate two closely related parts of a sentence, especially in more informal English
- **full stop** *British English*, **period** *American English* the sign . that is used to mark the end of a sentence or the short form of a word
- **exclamation mark** *British English*, **exclamation point** *American English* the sign ! that is used after a sentence or word that expresses surprise, anger, or excitement
- **question mark** the sign ? that is used at the end of a question
- **quotation marks** (also **inverted commas** *British English*) a pair of signs ' and ' that are put around words, especially to show that you are quoting what someone has said

colon

Freakuency Pack

12500 **7070**^{MCW}

15000 **5778**^{COCA}

RANGE: **9k COLON** 2355

colon 2240

colons 48

semicolon 38

semicolons 29

