

**moth**

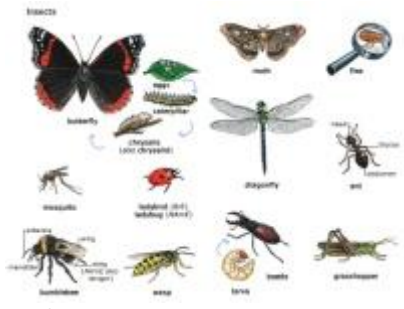
[mɒθ] *n*

1. моль
2. *энт.* ночная бабочка (*Lepidoptera*)
3. мотылёк

**moth**

Oxford Advanced Learners Dictionary 8th Ed.

**moth** [moth moths] *BrE* [mɒθ] <sup>ˈ</sup> *NAmE* [mɒθ] <sup>ˈ</sup> **noun**



a flying insect with a long thin body and four large wings, like a <sup>ˈ</sup>[butterfly](#), but less brightly coloured. **Moths** fly mainly at night and are attracted to bright lights.

Word Origin:

Old English moththe, of Germanic origin; related to Dutch [mot](#) and German [Motte](#).

**moth**

Longman DOCE 5th Ed. (En-En)

**moth** /mɒθ \$ mɒθ *BrE* <sup>ˈ</sup> *AmE* <sup>ˈ</sup> **noun** [countable]

[*Language:* Old English; *Origin:* moththe]



an insect related to the <sup>ˈ</sup>[butterfly](#) that flies mainly at night and is attracted to lights. Some moths eat holes in cloth.

**moth**

Freakuency Pack

12500 **7858**<sup>MCW</sup>  
 15000 **6080**<sup>COCA</sup>  
 RANGE: **6k** **MOTH** <sup>2129</sup>  
 moth 1122  
 moths 1007  
 COCA 500k Unlemmatized  
 514 **19941**<sup>1099</sup> *nn1*  
 2 **166960**<sup>23</sup> *np1*